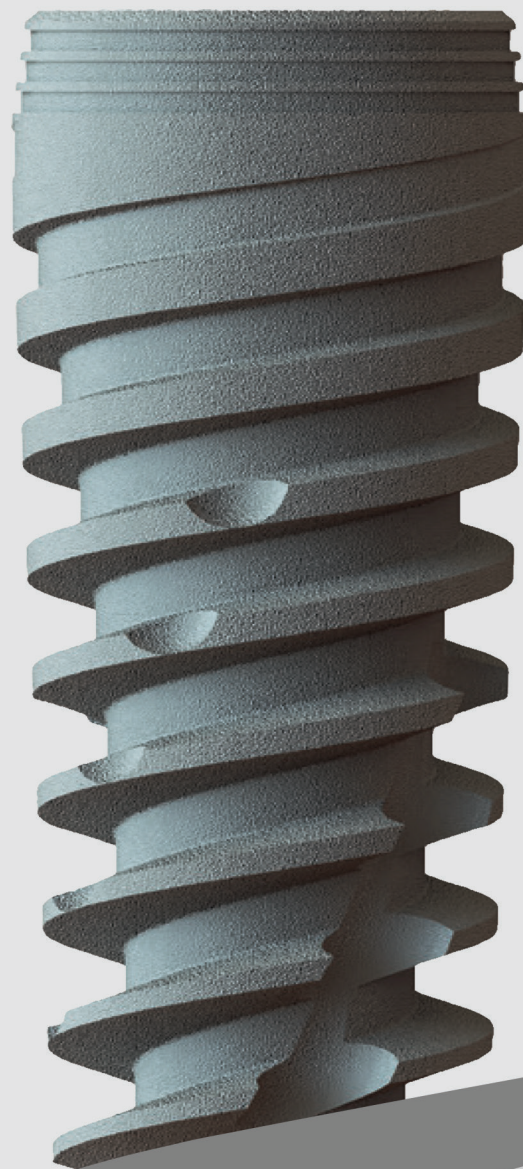




AUTO **FIT**

DENTAL IMPLANT



PRODUCT CATALOG
2024

About Company



Orthomed-E is a leading orthopedic implant company based in the Middle East, with a rich history spanning several decades. We specialize in manufacturing and exporting a wide range of orthopedic implants for Trauma, Spine, Hip, and Maxillofacial applications. Our commitment to quality and safety has earned us a strong reputation in the Middle East among the multitude of orthopedic implant manufacturers.

Our extensive portfolio comprises over a thousand orthopedic implants and instruments, catering to the diverse needs of medical professionals. In an ever-expanding global market, Orthomed-E Ltd. is emerging as a trusted manufacturer of top-quality orthopedic products known for their consistent excellence.

One of our key offerings is the Dental Implant System, a comprehensive solution that includes dental implants, corresponding abutments, healing caps, connection screws, and cover screws. All components of the Dental Implant System are meticulously crafted from titanium, conforming to ISO 5832-2 for the dental body and ISO 5832-3 for the retention components and implant features. The implant's bone anchoring surface is specially designed with a sandblasted acid-etched texture.

For comprehensive information regarding the qualitative and quantitative aspects of these materials, we invite you to consult The European Database on Medical Devices (EUDAMED), where this information is linked to the Basic UDI-DI. Additionally, our latest summary of safety and clinical performance (SSCP) is available, offering further insights into our commitment to product quality and safety.



C/NO: 302041542

C/NO: 301051542

C/NO: 863/2021/1

000002 19-03-21 / 000003 19-03-21 / 000004 19-03-21

Certified From ISO & CE & EDA & Free Sale.

-The first **EGYPTIAN IMPLANT** registered with the Ministry of Health in 2021 From EDA.

Implant Surface

SLA with MAD,

Unleash Radiance with SLA Brilliance: Transformative Surface Treatment for Dental Marvels! Embark on a journey of dental innovation with SLA Brilliance – a revolutionary surface treatment poised to redefine the art and science of implantology. Crafted with precision and powered by cutting-edge technology, SLA Brilliance elevates dental implants to new heights of excellence.

Dive into a realm of unmatched osseointegration as SLA Brilliance weaves a symphony between implant and bone. The surface treatment's micro-textured magic fosters a dance of biological harmony, ensuring a steadfast connection that radiates resilience and stability.

Witness the brilliance of seamless integration, setting the stage for enduring smiles.

Beyond function, SLA Brilliance is an ode to aesthetic perfection. Implants treated with this groundbreaking technology not only perform flawlessly but also boast a surface that captivates. Say goodbye to compromise as you offer patients a radiant blend of form and function – where the science of SLA meets the art of a captivating smile.

SLA Brilliance isn't just a surface treatment; it's a catalyst for accelerated healing and unwavering patient confidence. The micro-roughened terrain propels the recovery journey, reducing downtime and empowering patients to embrace life with renewed assurance. Elevate your practice as you become the architect of success stories, one radiant smile at a time.

In the diverse landscape of implantology, SLA Brilliance shines as a beacon of versatility.

Tailored for a spectrum of clinical scenarios, from single-tooth wonders to comprehensive rehabilitations, this surface treatment adapts to your expertise. Explore newfound freedom as SLA Brilliance becomes the canvas for your dental masterpieces.

An innovation backed by rigorous scientific inquiry, SLA Brilliance stands as a testament to reliability and credibility. Join the league of practitioners who trust in the evidence-driven brilliance of this surface treatment, where every implant procedure becomes a showcase of scientific excellence.

Step into a world where dental brilliance meets transformative surface treatment – choose SLA Brilliance and sculpt smiles that radiate confidence, stability, and aesthetic allure. Your journey to unparalleled implant success starts here!

Unleash Radiance with SLA Brilliance: Transformative Surface Treatment for Dental Marvels! Featuring Micro Arc Deposition Magic!

Embark on a journey of dental innovation with SLA Brilliance – a revolutionary surface treatment poised to redefine the art and science of implantology. Crafted with precision and powered by cutting-edge technology, SLA Brilliance, now enhanced with Micro Arc Deposition (MAD) magic, elevates dental implants to new heights of excellence.

Dive into a realm of unmatched osseointegration as SLA Brilliance, augmented by MAD, weaves a symphony between implant and bone. The combined micro-textured magic fosters a dance of biological harmony, ensuring a steadfast connection that radiates resilience and stability. Witness the brilliance of seamless integration, setting the stage for enduring smiles. Introducing the avant-garde touch of Micro Arc Deposition – where precision meets innovation. This cutting-edge technique, seamlessly integrated into SLA Brilliance, introduces a layer of microscopic perfection, enhancing the implant's surface with precision and finesse. Marvel at the microscopic landscape that ensures optimal conditions for cellular adherence and accelerated healing.



Implant Surface

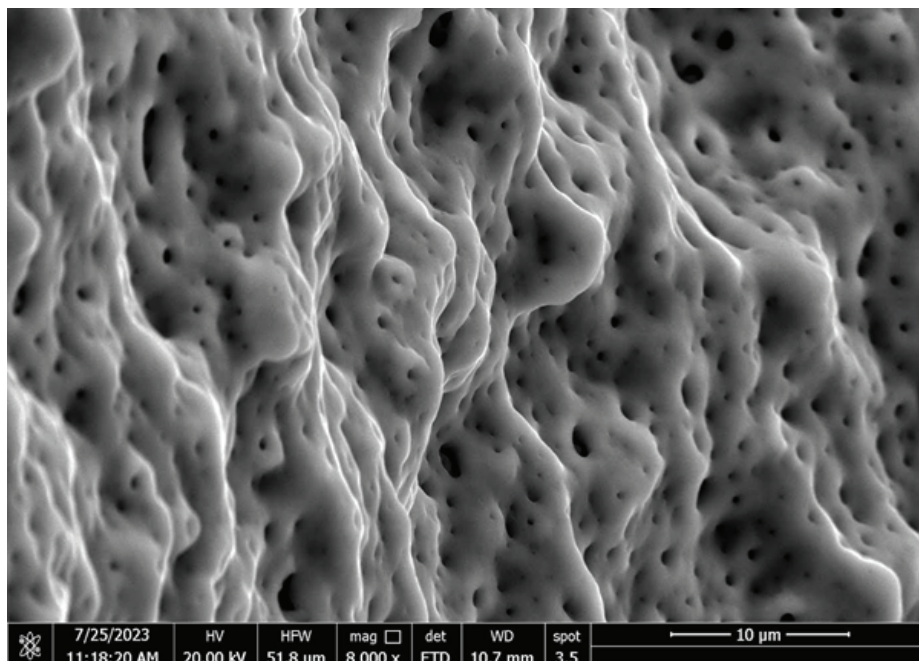
Beyond function, SLA Brilliance with MAD is an ode to aesthetic perfection. Implants treated with this groundbreaking duo not only perform flawlessly but also boast a surface that captivates. Say goodbye to compromise as you offer patients a radiant blend of form and function – where the science of SLA meets the art of a captivating smile, now with the added allure of MAD.

SLA Brilliance with MAD isn't just a surface treatment; it's a catalyst for accelerated healing and unwavering patient confidence. The micro-arc-deposited brilliance propels the recovery journey, reducing downtime and empowering patients to embrace life with renewed assurance. Elevate your practice as you become the architect of success stories, one radiant smile at a time.

In the diverse landscape of implantology, SLA Brilliance with MAD shines as a beacon of versatility. Tailored for a spectrum of clinical scenarios, from single-tooth wonders to comprehensive rehabilitations, this dynamic duo adapts to your expertise. Explore newfound freedom as SLA Brilliance with MAD becomes the canvas for your dental masterpieces.

An innovation backed by rigorous scientific inquiry, SLA Brilliance with MAD stands as a testament to reliability and credibility. Join the league of practitioners who trust in the evidence-driven brilliance of this enhanced surface treatment, where every implant procedure becomes a showcase of scientific excellence.

Step into a world where dental brilliance meets transformative surface treatment – choose SLA Brilliance with Micro Arc Deposition and sculpt smiles that radiate confidence, stability, and aesthetic allure. Your journey to unparalleled implant success starts here!



Implant Surface

Surface Cleanness verification

Elevate Confidence with Implant Excellence: Our Commitment to Purity and Precision!

At Orthomed E, we believe that every dental implant represents a promise – a promise of quality, purity, and precision. That's why we go above and beyond industry standards to ensure that each batch undergoes rigorous scrutiny for cleanliness and residue-free perfection.

Our commitment to excellence begins with an unwavering dedication to purity. Before reaching your practice, every batch of our dental implants undergoes a meticulous inspection process to guarantee a level of cleanliness that exceeds expectations. Trust in the unparalleled assurance that your patients deserve.

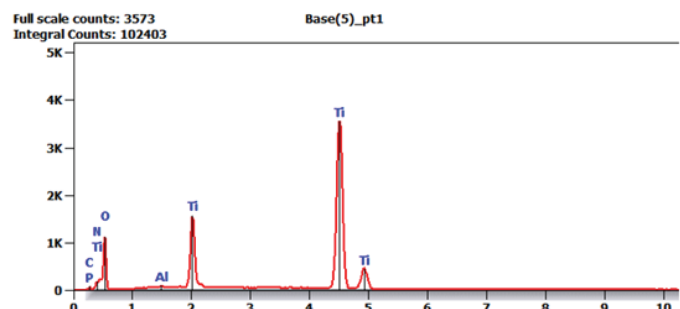
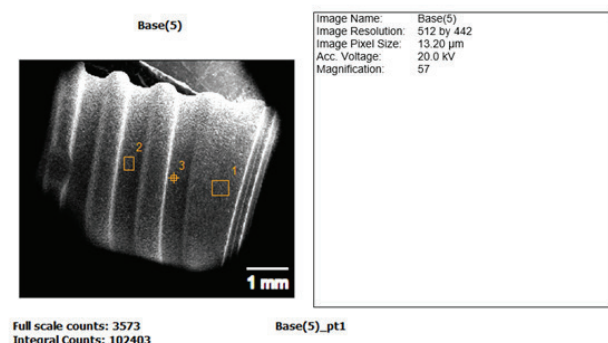
We understand that success in implantology hinges on precision. That's why, at Orthomed E, we leave no stone unturned in scrutinizing each implant for residues that could compromise the implant's performance. Our commitment to precision extends beyond aesthetics – it's a promise etched into the very fabric of our quality control processes.

To deliver on our promise of excellence, we employ cutting-edge testing protocols that delve into the microscopic details. Our state-of-the-art facilities are equipped to detect even the slightest impurity, ensuring that every implant that bears our name is a testament to the highest standards of cleanliness and quality.

Your patients deserve the best, and we believe in delivering nothing less. Our relentless pursuit of residue-free perfection means that each implant from Orthomed E is a symbol of confidence for both you and your patients. Experience peace of mind knowing that your practice is built on the foundation of uncompromised quality. We take pride in our transparent approach to innovation. As pioneers in the industry, we invite you to witness our commitment to cleanliness and residue-free implants firsthand. Partner with us, and let your practice be a beacon of trust, where patients confidently embark on their journey to lasting oral health.

Choose Orthomed E – where each batch undergoes a scrutiny beyond compare, ensuring a level of cleanliness and purity that defines the future of implant excellence. Elevate your standards; choose the assurance of quality that sets you apart.

Project: 31.10

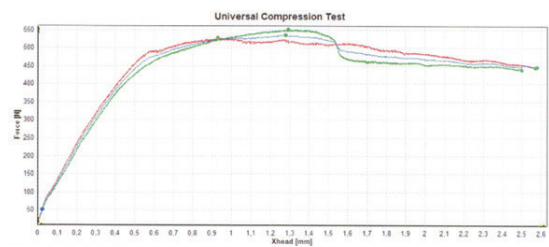
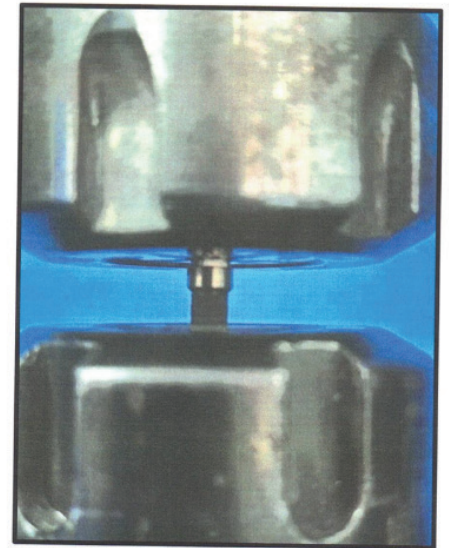
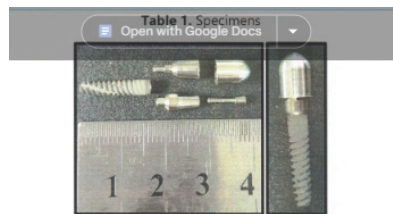
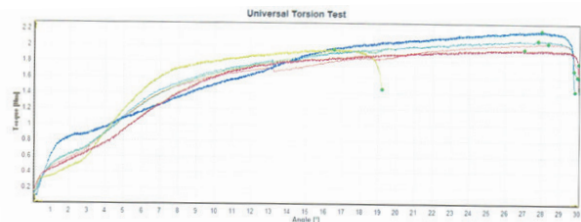


Implant Surface

Biomechanical Testing

Elevate Confidence with Implant Excellence: Our Commitment to Purity, Precision, and Biomechanical Assurance!

Our commitment to excellence goes beyond appearance; it's anchored in biomechanical integrity. Each Design of our implants is subjected to rigorous biomechanical testing, ensuring that they not only meet but exceed the performance expectations. Your patients can trust in the structural soundness and reliability of every implant, setting the stage for lasting oral health.



Implant Sizes

Diameter (Ø)

Lenth (mm)



Ø3.5		
Lenth mm	Code	
8.5		
10.0		
11.5		
13.0		
16.0		

Ø4.3		
Lenth mm	Code	
8.5		
10.0		
11.5		
13.0		
16.0		

Ø5.0		
Lenth mm	Code	
8.5		
10.0		
11.5		
13.0		
16.0		

ABUTMENTS

• Long



Diameter (Ø)	GH mm	Code
Ø4.6	1.0	
	2.0	
	3.0	

• Short



Diameter (Ø)	GH mm	Code
Ø4.6	1.0	
	2.0	
	3.0	



• 15 Angel



Diameter (Ø)	GH mm	Code
Ø4.7	2.0	
Ø5.0	3.0	

• 25 Angel



Diameter (Ø)	GH mm	Code
Ø4.7	2.0	
Ø5.0	3.0	

IMPRESSION POSTS

• Repositioning cap, Closed coping



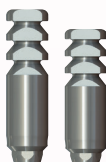
Diameter (Ø)	GH mm	Code
Ø4.3	7.0	

• Impression Posts, Closed Coping



Diameter (Ø)	GH mm	Code
Ø3.5	11.6	
Ø4.5	11.6	

• Impression Posts, Open coping (Long & Short)



Diameter (Ø)	GH mm	Code
Ø3.5	15.9	
Ø3.5	12.8	

• Impression Posts, Open coping (Long & Short)



Diameter (Ø)	GH mm	Code
Ø3.5	15.9	
Ø3.5	12.8	

• Impression Screw, Open coping (Long & Short)



Diameter (Ø)	GH mm	Code
-	21.0	
-	26.0	

• Analog






Diameter (Ø)	GH mm	Code
Ø3.8	13.0	

Accessories


GINGIVA FORMERS

- Tapered

	Diameter (Ø)	GH mm	Code		Diameter (Ø)	GH mm	Code		Diameter (Ø)	GH mm	Code
	Ø4.5	3.0			Ø5.5	3.0			Ø6.5	3.0	
		5.0				5.0				5.0	
		7.0				7.0				7.0	


PREMOLAR ABUTMENTS

- Short & Long

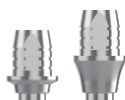
	Diameter (Ø)	GH mm	Code
	Ø4.5	10.0	
	Ø4.5	13.6	

CAD/CAM


- Scan adapter

	Diameter (Ø)	GH mm	Code
	Ø4.0	12.6	

- Ti Base (No Hex)

	Diameter (Ø)	GH mm	Code
	Ø4.5	0.7	
		2.4	

- Ti Base (Hex)

	Diameter (Ø)	GH mm	Code
	Ø4.5	0.7	
		2.4	

Accessories

CASTABLE ABUTMENTS

- Castable abutment



Diameter (Ø)	GH mm	Code
Ø4.6	14.0	

BALL ANCHORS

- Transgingival ball anchor



Diameter (Ø)	GH mm	Code
Ø4.6	1.0	
	2.0	
	3.0	
	4.0	
	5.0	
	6.0	
	7.0	

RETENTION SCREWS

- Retention screw



Diameter (Ø)	GH mm	Code
-	9.3	

- Retention screw (blue)



Diameter (Ø)	GH mm	Code
-	9.3	

LOCATOR ABUTMENTS

- Locator Abutments



Diameter (Ø)	GH mm	Code
Ø3.7	2.0	
	3.0	
	4.0	
	5.0	
	6.0	
	7.0	

LOCATOR ACCESSORIES

- Implant analog (Locator)



Diameter (Ø)	GH mm	Code
Ø3.7	14.0	

LOCATOR ACCESSORIES

- Impression coping (locator)



Diameter (Ø)	GH mm	Code
-	7.0	

- Cap (locator)



Diameter (Ø)	GH mm	Code
Ø5.5	2.3	

- Plastic insert (locator), soft (4 pieces)



Diameter (Ø)	GH mm	Code
Ø4.6	-	

- Plastic insert (locator), reinforced retention (4 pieces).



Diameter (Ø)	GH mm	Code
Ø4.6	-	

- Locator set



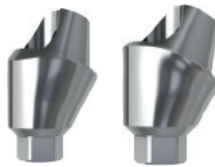
Accessories

MULTIUNIT ABUTMENTS

- MultiUnit Straight



- MultiUnit (Angle 20)



- MultiUnit (Angle 30)



- MultiUnit Titanium



- MultiUnit Impression



- MultiUnit Analog



BALL ANCHOR ACCESSORIES

- Impression sleeve



Diameter (Ø)	GH mm	Code
Ø5.5	8.0	

- Implant analog



Diameter (Ø)	GH mm	Code
Ø4.5	15.8	

- Cap



Diameter (Ø)	GH mm	Code
Ø5.0	3.2	

- Plastic insert soft



Diameter (Ø)	GH mm	Code
Ø3.9	-	

- Plastic insert, reinforced retention

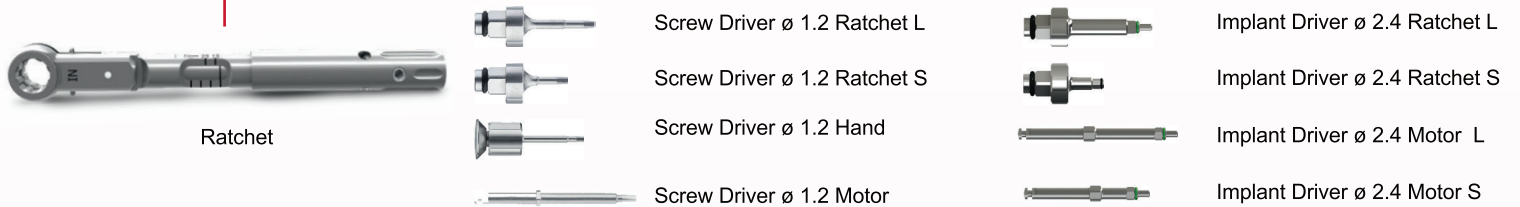
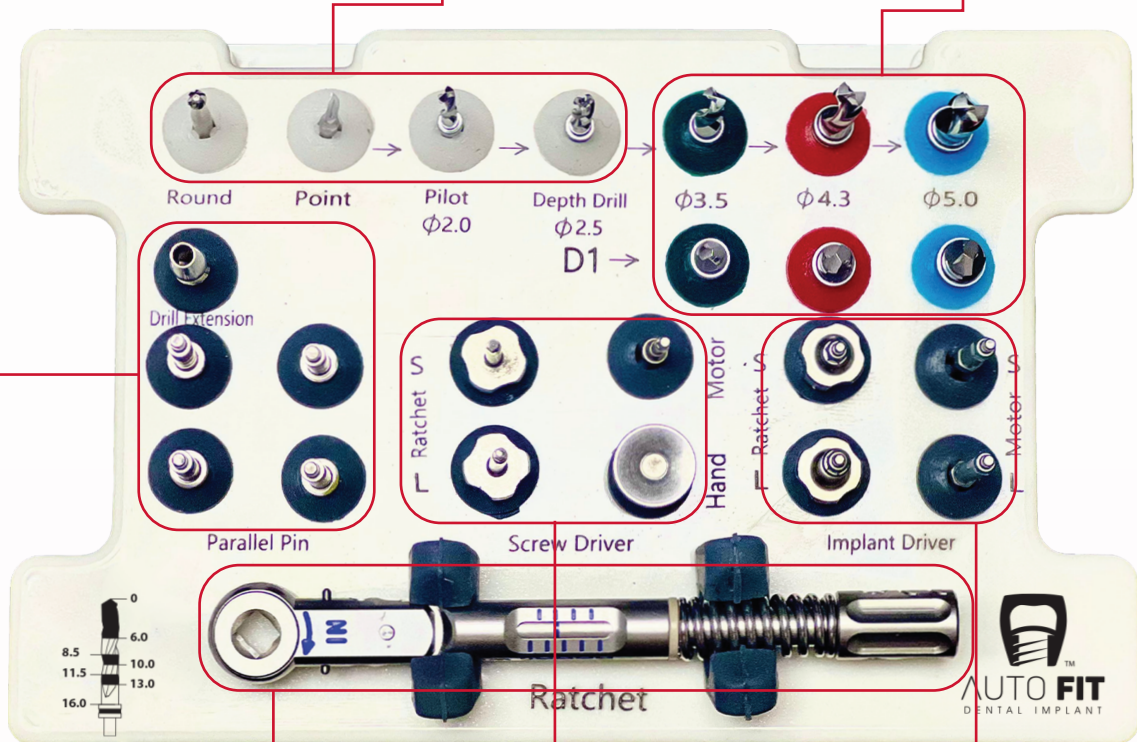
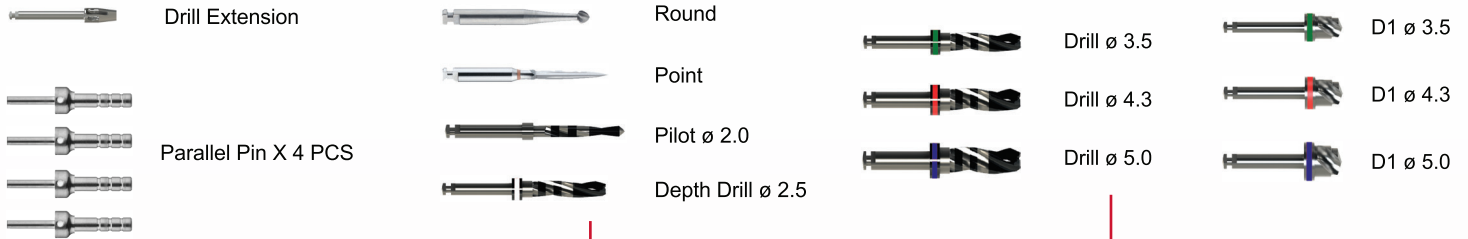


Diameter (Ø)	GH mm	Code
Ø3.9	-	

- Ball anchor set



● AF REGULAR KIT





AUTO FIT



D E N T A L I M P L A N T

For Sale:

📍 7 El-Saraya El-Manial front of Dentistry
Kasr El-Aini , first floor, flat 8 , Cairo, Egypt

☎ +2010 9008 6999 ☎ +20 2 23659510

🌐 www.autofitimplant.com

📱 /AutoFitImplant



📍 6th of October city, 3rd industrial area, 201/3. Giza - Egypt

☎ +202 38204966-77 ✉ info@orthomed-e.net

☎ +202 38204988 🌐 www.orthomed-e.net