



Compass^{med}

commitment and passion



Compass^{med}

Commitment and Passion

Who are we

Compass med is a multi-disciplinary Egyptian company based in Cairo, Egypt.

For the last 10 years, we have been part of setting the quality and technology standards of the healthcare market, especially in the dental sector which is our main specialty.

We are currently holding the exclusive agencies for a group of industry global leaders, achieving market leadership in the middle east and among top regional representatives.

Besides our healthcare business development role, **Compass med** holds a special subsidiary providing the services of business consultation and optimization solutions.

In **Compass med** we do more than sell products, we take it beyond this to deliver the maximum functionality and best customer experience and keep ourselves in shape in terms of the frontline sales team, presentation methods, customer communication tactics, and emergency rapid response.

While reading these lines, **Compass med** is holding the exclusive agency for Biolase dental LASER as a market leader in Egypt and one of the top 5 Biolase distributors in Africa and the middle east and one of the top 10 Biolase distributors worldwide.

Compass med also is holding an exclusive agency for Carestream dental systems and Formlabs 3D printers in Egypt

Besides its well-known history in medical business development, **Compass med** holds a special subsidiary serving in business consultation and optimization solutions.

The range of services includes brand establishment, brand management, partners selection services, supply chain optimization, operations control, ..etc.



Vision:

Compass med is dedicated to serve the upper third of the dental market. A+, A, B+ customers represent our primarily target group.

Products we offer, should represent the highest trend in dental technologies

Our step ahead is not only about products, we take it to our daily work by keeping ourselves in-shape in terms of frontline sales advisors, presentation methods, customer communication tactics, purchasing access points and emergency rapid response.

By the end of 2030, we plan to hit the total revenue of 5,000,000.00 USD with more than 30 employees 2 branches in Egypt and two international subsidiaries.

Why to choose Compass med?

The market:

Operating in Egypt with its price sensitive market nature, higher sales volumes and bigger geographical distribution and focus on difficult treatments,

centralized operations hub and elite destination for treatment and rehabilitation and more focus on cosmetic treatments.

Compass med focus on selling dental products for dental private clinics, governmental/private hospitals, and university hospitals.
Primary target group: (A+), (A), (B+) customers.

we do prefer to contact directly with our customers, however, our network of sub distributors can also serve to facilitate to reach and serve our customers in remote areas.

The company:

Compass med is inspired by a short rich history of success, Our continuous search for the best makes us one of the most potential successful business partners in country. Add to it the highly experienced high officers who served big dental manufacturers for years before building **Compass med** which provides an extensive database in all fields of dentistry.

The team:

Every single person in our team is carefully selected and trained to deliver our message, image and vision for the future to our customers.

Summary:

Receiving this profile, you can recognize how much interest we show to cooperate with you, and we do appreciate your interest to cooperate with us as well. We are able to see the potential in ourselves as well as we see it in the market for your range of products and we believe a strong based mutual beneficial business relation is the optimum way to meet those opportunities.

Kindly consider this document as very important, confidential and treat it with mandatory care and security measures.

With compliments

BIOLASE®

Advancing Dentistry™

epicX



epic Q



BIOLASE®

 *Advancing Dentistry™*

waterlase[®] iPlus™



Waterlase MDX





RVG 6200



RVG 142



RVG 5200



CS 2100



CS 2200



CS 7600

CS 7200



CS 8100 SC



CS 8100





CS 8200 SC



CS 8200



CS 9600



CS 9600 SC





DEXIS™

IS 3600



IS 3700



IS 3800W



Kerr™

Composites

Harmonize Composite



SonicFill 3 Composite



OptiShade Composite



Kerr™

Composites

SimpliShade Bulk Fill Flow



SimpliShade Bulk Fill



Kerr™

Composites

Herculite Classic



Herculite XRV



Herculite XRV Ultra Flow



Kerr™

Bonding Agents

OptiBond FL



OptiBond Universal



OptiBond eXTRa Universal



Kerr™

Dental Cements

NX3 3rd gen Resin Cement



Maxcem Elite Universal Resin Cement



Maxcem Elite Chroma



Kerr™

**Finishing &
Polishing**

**OptiShine
Impregnated Brush**



**OptiDisc
Finishing & Polishing**



**Opti 1 Step
Polisher
Finishing & Polishing**



Kerr™

**Dental
Temporisations**

Temp-Bond clear Long Term Temp Cement



Temp-Bond NE Ca H based Temp Cement



Kerr™

**Infection Prevention
& Control**

OptiDam 3D Rubber Dam System



OptiView 3D Retractor



Kerr™

Impression Materials

Impression Compound



Impression Compound Cake



Kerr™

**Endodontic
Obsturation**

Sealapex Endo Sealer



Kerr™

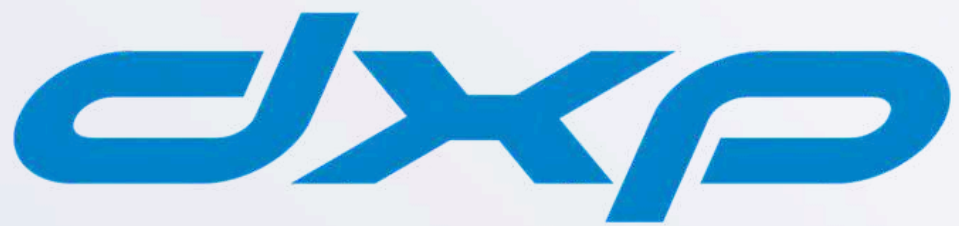
Accessories

SuperMat Automatrix system



SoftClamp Resin Universal Clamp





**DXP CLAVE
Sterilization
18L-24L**





DMG

**FABRICATION
OF TEMPORARIES**

Luxatemp Plus



Luxatemp Star



Luxatemp Fluorescence





GLASS IONOMER CEMENT

DeltaFil



UNDERFILLING MATERIAL

Ionosit Baseliner





IMPRESSION MATERIAL

Honigum Pro Light



Honigum Pro Putty





DMG

Silagum Putty



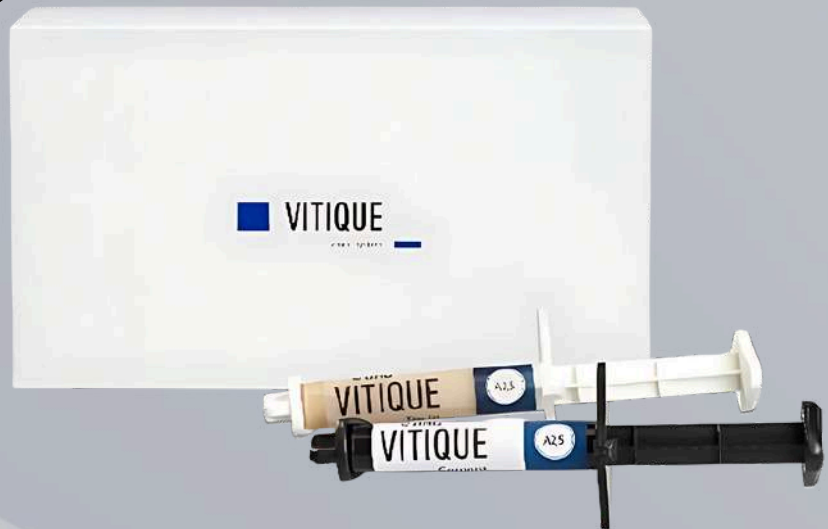
Silagum Light





**PERMANENT
CEMENT**

VITIQUE



MiniDam





PROPHYLAXIS

Flairesse Varnish



INFILTRATION

Icon Vestibular





CORE BUILD UP & ROOT POST

LuxaPost



LuxaCore Z Duel





DMG

BITE REGISTRATION

O-Bite



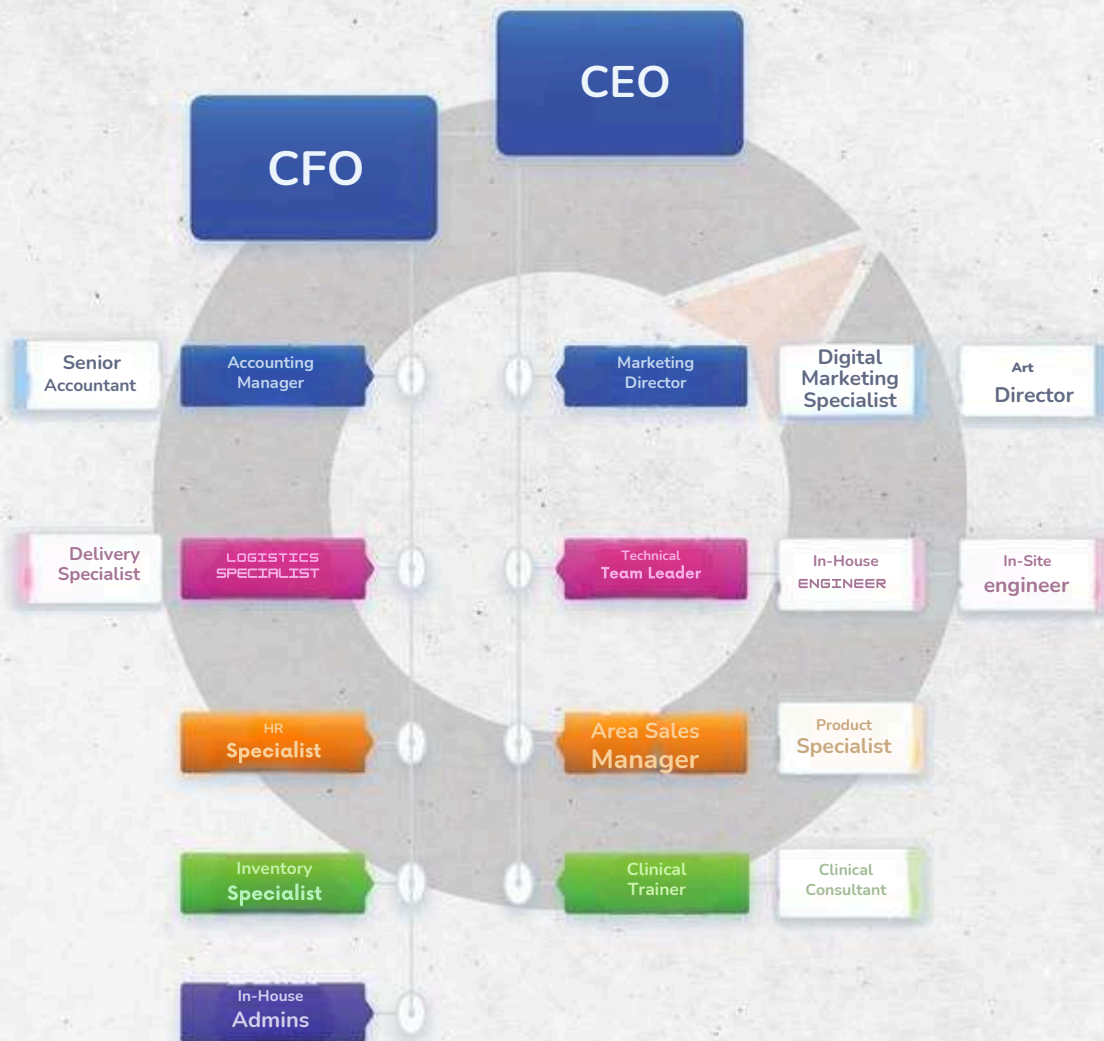
RETRACTION MEDIUM

Retraction Paste



Structure

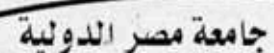
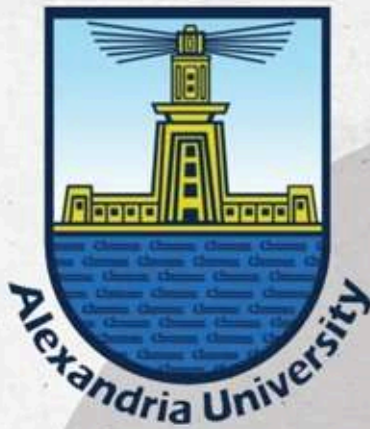
Structure



EMPLOYEES No= 32



Our Partners





Success Highlights

Establishing 9 laser centers at 9 universities

Ranked number 1 in Universities sales of LASER Devices worldwide.

Sponsoring 2 LASER fellowships with Genova and RWTH Aachen Universities.

Rated among the top 5 Biolase Distributors in the middle east and the best 10 distributors worldwide.

The market leader of Diode and Erbium LASER devices in Egypt.

More than 40 Dental and Medical Imaging centers in Egypt are equipped with



Keep in touch



More information call us
+20 12 0000 2530



Technical Support
+20 12 1212 8000



www.compass-egy.com
VISIT OUR WEBSITE



Compass med



Compass.med



Compass med



Compass med



info@compass-egy.com



+20 12 0000 2530



19 Khalil Al-Arousi Heliopolis, Cairo, Egypt
OUR LOCATION