

# Endo Motor

Without built-in apex

Accurate

Effective

Intelligent

- Built-in file sytem
- TFT color screen
- 16:1 contra angle
- Connect with apex locator
- Forward
- Reverse
- Reciprocating
- Automatic torque

## Core algorithm

Real-time feedback on torque output and speed  
Intelligent reversal meeting large resistance



## Imported motor

Stable & Silent, Work fluently



Can work with apex locator

## Specification

Speed range: 150-1000rpm

Torque range: 0.6-4.0N.cm

Battery: 3.7V/1500mAh

Weight of Main Unit: 96g

## 2 in 1 Endo Motor

*with built-in apex*



### Specification

Speed range: 150-1000rpm

Torque range: 0.6-4.0N.cm

Battery: 3.7V/1500mAh

Weight of Main Unit: 96g

**Accurate / Effective / Silent**

- Built-in file sytem
- TFT color screen
- Built-in apex locator
- 16:1 contra angle



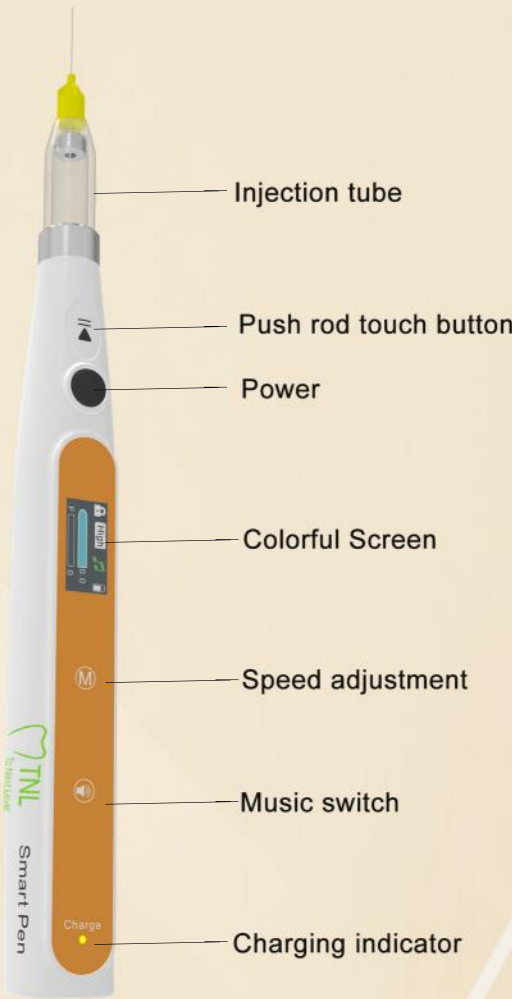
- Forward
- Reverse
- Reciprocating
- Automatic torque



Model: Smart Pen

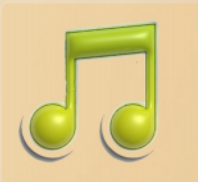
# Anesthesia Pen

Accurate / Efficient / Relaxing / Comfortable



Two colors for option

● Black ● Orange



Relaxing Music

Comfortable treatment experience



8pcs Injection tube

Autoclavable, (134℃, 0.2Mpa~0.23Mpa)

## Specification

Battery: 3.7V/250mAh

Power: DC 5.0V

Weight of main unit: 78g

Three adjustable speed

Geers	Single anesthetic injection time
High	50~70s
Slow	130~170s
PDL	200~280s



# Curing Light

## Wide Spectrum

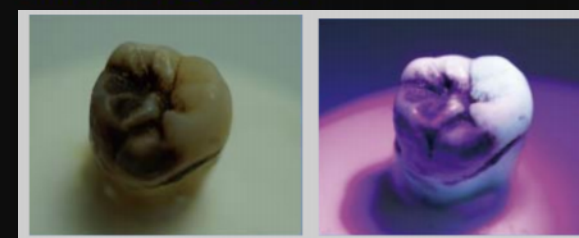


*1 Second for curing*

*7 Working Modes*

*High light intensity*

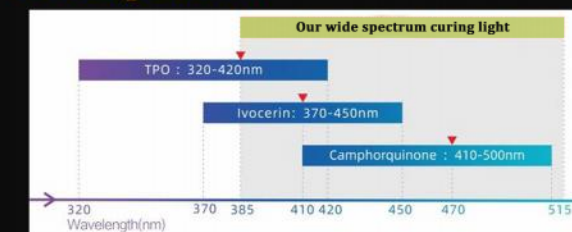
## Carries detection



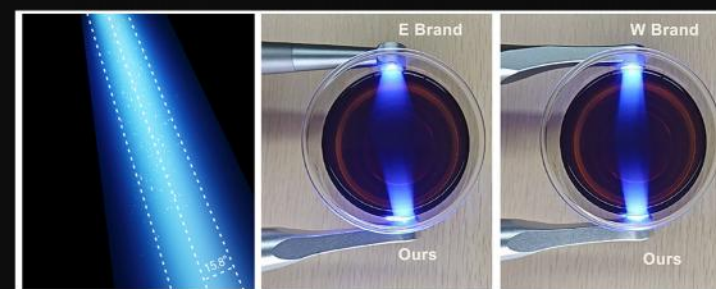
Before

After

## Wide spectrum



## Uniform beam, strong penetrability



More focused light output due to light angle of only 15.8° , ensuring good deep curing effect.

## 10W LED



With coated flat convex lens

Light intensity up to 3000 mW/cm<sup>2</sup>

## Seven different modes

Normal 15 <sup>s</sup> 1200mW/cm <sup>2</sup>	High 05 <sup>s</sup> 2000mW/cm <sup>2</sup>	Turbo 01 <sup>s</sup> 3000mW/cm <sup>2</sup>	Ortho 03 <sup>s</sup> × 5 3000mW/cm <sup>2</sup>	Pulse 10 <sup>s</sup> 1200mW/cm	Soft 05 <sup>s</sup> 1200mW/cm <sup>2</sup>	Check 30 <sup>s</sup> 600mW/cm <sup>2</sup>
---	---	--	--	---------------------------------------	---	---

Mode	Curing time (Seconds)	Light intensity (mW/cm <sup>2</sup> )	Suitable for
Normal	5,10,15,20	1000-1200	Most treatment scenarios, such as fillings, restorations etc.
High	3, 5	1800-2000	Quick curing, ensuring enough curing depth Bonding porcelain veneers and curing large resin blocks
Turbo	1, 3	2700-3000	Indirect repair, such as crown repair bonding, post core bonding, orthodontic bracket bonding, pit and fissure sealant curing, etc
Ortho	3s*5, 3s*10	2700-3000	Orthodontic bracket bonding, 3 seconds * 5 times, 3 seconds * 10 times, with a 2-second interval in between
Soft	5,10,15,20	1000-1200	Effectively reduce the shrinkage rate of resin; Lower the risk of microleakage
Pulse	5,10,15,20	1000-1200	orthodontic bracket bonding, 3 seconds * 5 times, 3 seconds * 10 times, with a 2-second interval in between
Check	30, 60	/	Detection of caries, calculus and craked tooth





Model: DM-Apex

## APEX LOCATOR

Accurate / Ai algorithm / Color screen



The file begins to  
enter into the root canal

Power indicator

Volume display

Reaching the  
narrow root apex

Reaching the anatomical  
apical foramen, display 0.0

File exceeds  
apex displays "--"

- AI USA imported chip
- New multi-frequency
- 800mAh lithium battery
- Suitable for all kinds of root canal

### Specification

Dimensions of Main Unit: 110 \* 67 \* 52mm

Adapter: DC 5V/1A

Weight of Main Unit: 93g

Battery: 3.7V/800mAh

Screen: 3.2' LCD